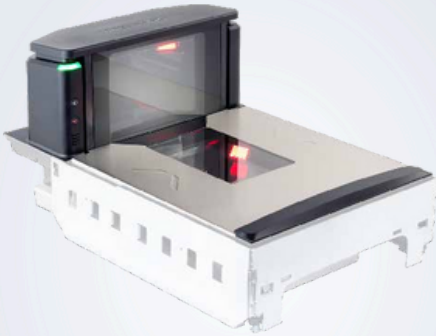


# MAGELLAN™ 9550i

45% Faster scanning, less power than a lightbulb



**HIGH PERFORMANCE AND COST SAVINGS** The Magellan 9550i is the new addition to the range of powerful bi-optic scanners. It is the perfect value for money solution that offers the lowest power consumption on the market, without compromising performance.

The Magellan 9550i delivers 2D code reading that is an impressive 45% faster than the previous Magellan bi-optic generation and supports GS1 digital link.

## DROP-IN REPLACEMENT

Magellan 9550i utilizes the same form-factor as our other Magellan bi-optics and is a simple drop-in replacement for any of the previous generation products. Additionally the 9550i uses the same power supply, scale display, and interface cables as 93/94/96/99 making stocking accessories easier.

## SUPPORT TO LOSS PREVENTION

The 9550i includes the All-Weighs platter design for weighing accuracy as well as an optional in-bonnet USB color camera that supports AI workflows when paired with an external PC.

## ENTERPRISE FEATURES

Remote Management is supported for OPOS, JavaPOS on Windows or Linux-based systems.

## FEATURES

- Better 1D and 2D performance than our previous generation bi-optics as well as out-of-the-box support for GS1 2D Digital Link.
- Available with a dedicated Magellan Customer Service Scanner (CSS) with omni-mount for reading cell phones, coupons and loyalty cards
- Magellan 9550i bi-optic form factor is compatible with traditional checkstands and scanning techniques, providing a competitively priced, high-performance scanning experience
- Available with factory installed scales in pre-verified and on-site certifiable versions and models for integration with local scale manufacturer solutions
- EASEOFCARE Service Plans offer a wide range of service options to protect your investment, ensuring maximum productivity and ROI

## INDUSTRY - APPLICATION

### All-Weighs Scale Platter

- The All-Weighs scale platter design provides an

alternative weighing surface on top of the bonnet, allowing the user to lay produce that is too long to fit on the platter.

### USB Color Camera

- In-Bonnet USB Color Camera means that retailers can take advantage of new AI workflows like Produce Recognition.

# TECHNICAL SPECIFICATIONS

DECODING CAPABILITY	
<b>1D / Linear Codes</b>	Autodiscriminates all standard 1D codes including GS1 DataBar™ linear codes.
<b>Stacked Codes</b>	EAN/JAN Composites; GS1 DataBar Composites; GS1 DataBar Expanded Stacked; GS1 DataBar Stacked; GS1 DataBar Stacked Omnidirectional; MicroPDF417; PDF417; UPC A/E Composites
<b>2D Codes</b>	Aztec Code; Data Matrix; QR Code, Micro QR Code
ELECTRICAL	
<b>AC Power Requirements</b>	AC Input: 100 - 240 VAC, 50-60 Hz Power Consumption: Operating (Nominal): 3.95W (2.57 ECO Mode) Idle (Nominal): 2.6W (1.7W ECO Mode)
ENVIRONMENTAL	
<b>Ambient Light</b>	0-86,080 lux
<b>ESD Protection (Air Discharge)</b>	25 kV
<b>Humidity (Non-Condensing)</b>	5 - 95%
<b>Temperature</b>	Operating: 10 to 40 °C / 50 to 104 °F Storage/Transport: -40 to 70 °C / -40 to 158 °F
INTERFACES	
<b>Auxiliary Ports</b>	Remote Scale Display EAS Controller Port Powered USB Host (Type A) (x2) RS-232 Single Cable/Dual Cable
<b>Multi-Interface</b>	USB COM/OEM/Keyboard USB Single Cable COM
<b>Remote Management Capabilities</b>	Diagnostic Reporting; WMI (OPOS and JavaPOS) and MBeans (JavaPOS) compliant Host Download, Toshiba Remote Management Agent, DLRMUS, and other ERP management Solutions
LOSS PREVENTION	
<b>All-Weighs Scale Platter</b>	Integrated horizontal and vertical scale platter surfaces increase active weighing area for easy, accurate weighing of large items.
<b>EAS Features</b>	Integrated EAS Antenna for Checkpoint and Nedap. Sensormatic Deactivation Controller
<b>USB Color Camera</b>	The in-bonnet USB color camera allows retailers to take advantage of image capture or AI anti-shrink workflows like Produce Recognition

OPTIONAL FEATURES	
<b>Dual Interval Scale</b>	Minimum Increment: Range 1: 0.002 kg / 0.005 lb; Range 2: 0.005 kg / 0.010 lb Scale Capacity: Range 1: 0 - 6.0 kg / 0 - 15.0 lb; Range 2: 6.0 - 15.0 kg / 15.0 - 30.0 lb
<b>Single Interval Scale</b>	Minimum Increment: 0.005 kg / 0.010 lb; Scale Capacity: 0 - 15.0 kg / 0 - 30.0 lb
PHYSICAL CHARACTERISTICS	
<b>Dimensions</b>	Depth (Below Counter): 10.2 cm / 4.0 in Height (Above Counter): 13.0 cm / 5.1 in Length (By Model): Width: 29.2 cm / 11.5 in 9551 (Short, Scanner Only): 35.6 cm / 14.0 in 9553 (Medium, Scanner Only): 40.1 cm / 15.8 in 9555 (Long, Scanner Only): 50.8 cm / 20.0 in 9554 (Medium, Scanner/Scale): 40.1 cm / 15.8 in 9556 (Long, Scanner/Scale): 50.8 cm / 20.0 in
<b>Indicators</b>	Volume/Tone Visual: Good Read confirmation for all reading planes; Scale center of zero

READING PERFORMANCE	
<b>Image Capture</b>	Horizontal and Vertical Window: Graphic Formats: BMP, JPEG; Greyscale: 256, 16, 2
<b>Illumination</b>	Multiple Diffused LEDs: Orientation and wavelength optimized for eye comfort
<b>Reading Coverage</b>	Seamless reading of linear and 2D codes in all planes (5 sides plus Customer Service Scanner)

SAFETY & REGULATORY	
<b>Agency Approvals</b>	The product meets necessary safety and regulatory approvals for its intended use. The Quick Start Guide for this product can be referred to for a complete list of certifications.
<b>Environmental Compliance</b>	Complies to China RoHS; Complies to EU RoHS; Complies to R.E.A.C.H. - EC1907/2006

UTILITIES	
<b>Aladdin™ Utility</b>	Aladdin configuration software is available for download at no charge.
<b>OPOS / JavaPOS</b>	OPOS and JavaPOS utilities are available for download at no charge.
WARRANTY	
<b>Warranty</b>	1-Year Standard Factory Warranty

## ACCESSORIES



Multiple options available in English or Metric units



Multiple options available in English or Metric units